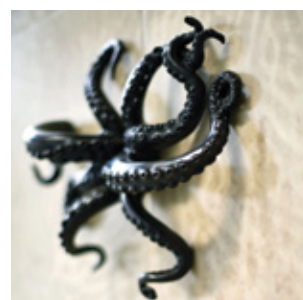
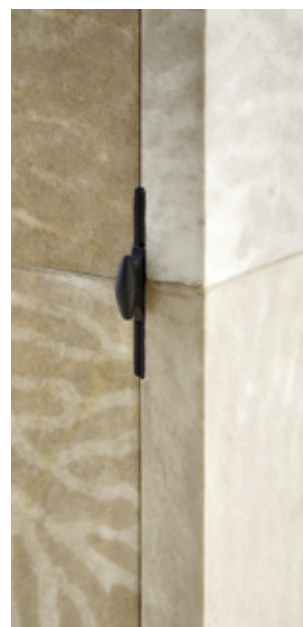




ALEXANDER
LAMONT



Ocean Armoire

FG000076 Reef Coral Parchment

Inspired by the idea of light beneath the ocean, coral patterns have been applied onto the parchment that envelops the exterior of the cabinet. The dark bronze octopus and feet contrast with the dramatically varied tone of the skins while the interior is lined with Ivory parchment.

Inches	W 27 1/2 in	D 20 1/2 in	H 72 7/8 in
Centimetres	W 70 cm	D 52 cm	H 185 cm

Materials : Reef Coral Parchment, Ivory Parchment, Bronze Patina, Walnut
App. weight : 101 kgs. / 222.5 lbs.

